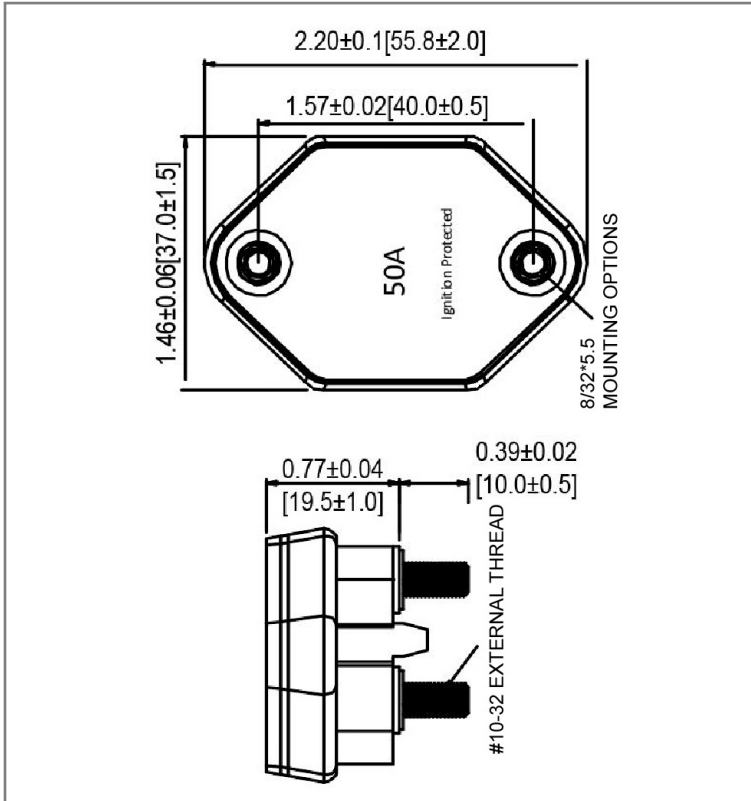


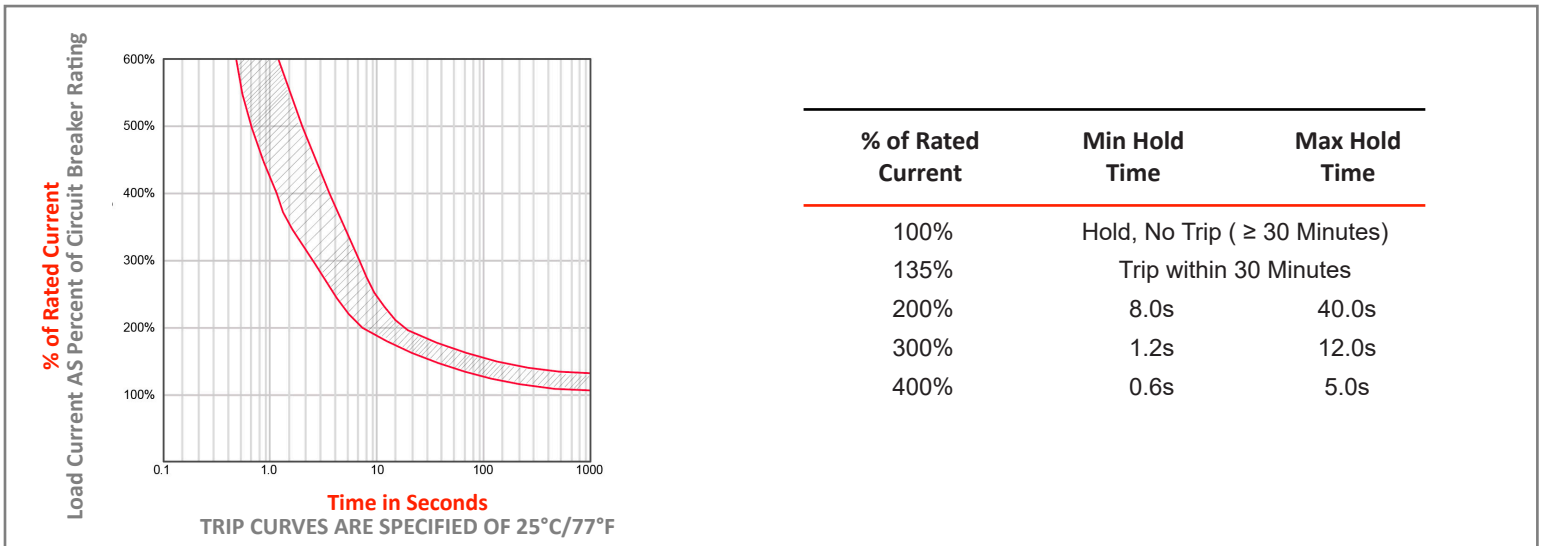
Mechanical Dimensions: Inches [mm]



Part Numbers Information

| Optifuse P/N | Current |
|--------------|---------|
| 641010 | 10A |
| 641015 | 15A |
| 641020 | 20A |
| 641025 | 25A |
| 641030 | 30A |
| 641035 | 35A |
| 641040 | 40A |
| 641050 | 50A |
| 641060 | 60A |

Time vs. Percent of Rated Current



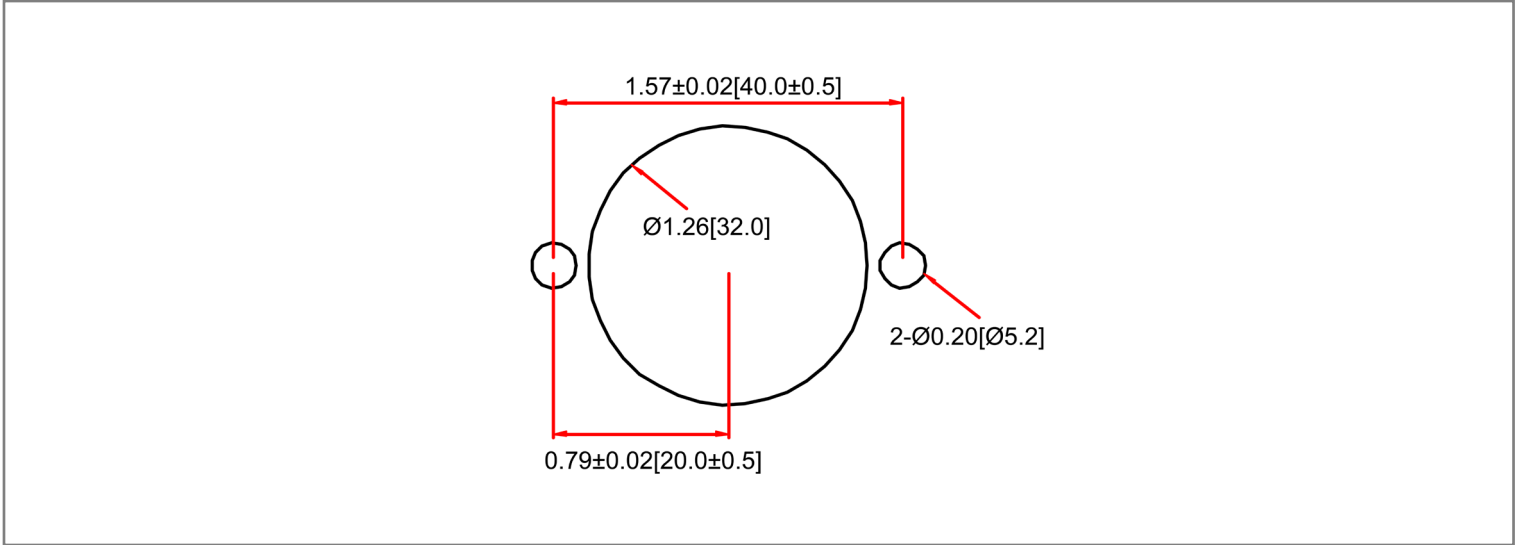
Electrical Specifications

| | |
|------------------------------|--------------------------|
| Voltage Rating | 32VDC |
| Reset Type | Type I - Auto Reset |
| Interrupting Rating | 2500A @32VDC (ABYC E-11) |
| Operation Temperature | -40 °F ~ 185 °F |
| Testing | SAE J553, ABYC E-11 |

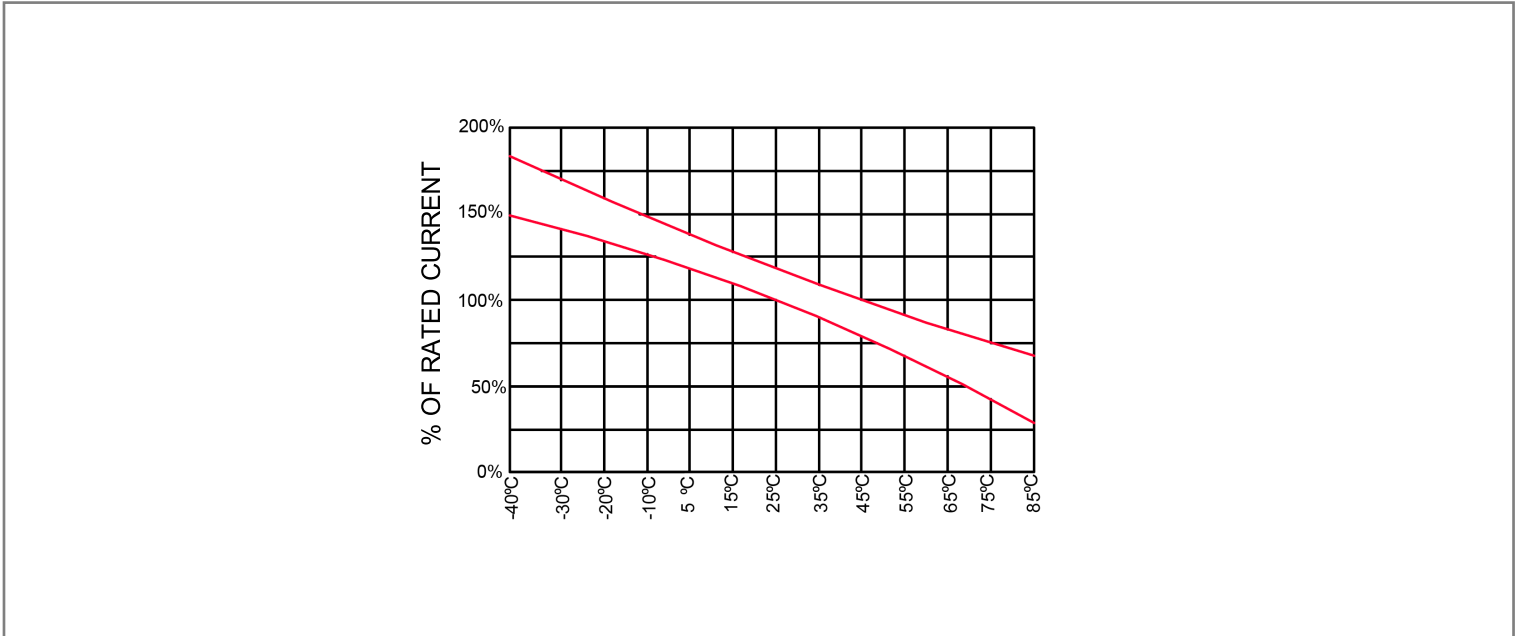
Material Specifications

| | |
|--|--------------------------------------|
| Mid-Range - Waterproof Circuit Breaker | |
| Terminals Configuration | #10-32 Stud |
| Studs Torque | 2.8 N.m max. |
| Mounting Torque | 0.78 N.m max. |
| Mounting Type | Panel Mount; #8-32 threaded inserts. |
| Ignition Protected | SAE J1171 Waterproof IP66 |

Mounting Hole



Temperature Derating Curve



Disclaimer: Information provided is believed to be accurate and reliable. Users are responsible for confirming the suitability and performance of any OptiFuse product for their particular application. These products may not be appropriate for every use, and proper evaluation is recommended before implementation. For additional information, please visit optifuse.com/product-disclaimer.

Specifications are subject to change without notice

| Rev | Date of issue | Revision Notes | Designed | Approved |
|-----|---------------|-----------------------------|----------|----------|
| E | 03-03-2026 | Include the trip time table | RC | OF |