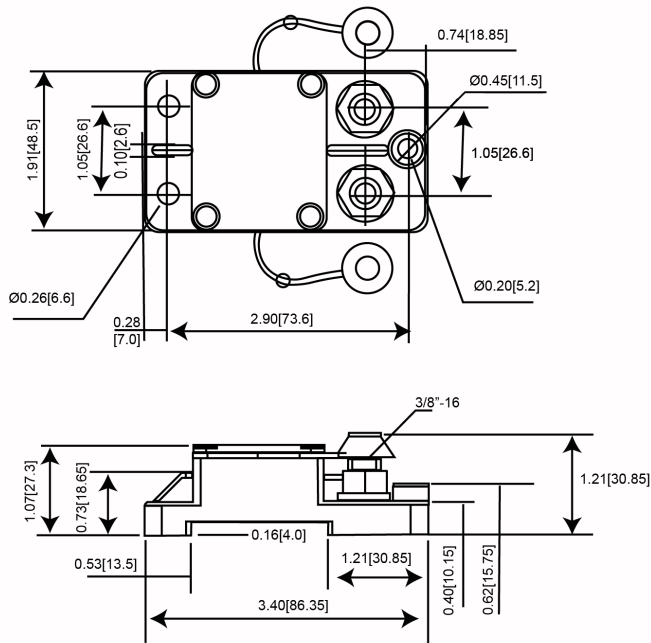


High Amperage Heavy Duty Circuit Breaker

551



Mechanical Dimensions: Inches [mm]

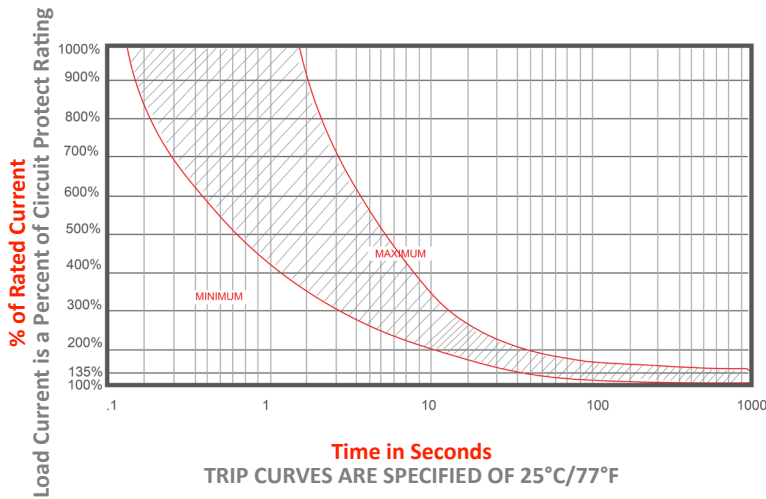


Unless Otherwise Specified All Dimensions Have a Tolerance of ± 0.008 in (0.2mm)

Part Numbers Information

Optifuse P/N	Current
551025	25A
551030	30A
551040	40A
551050	50A
551060	60A
551070	70A
551080	80A
551090	90A
551100	100A
551120	120A
551135	135A
551140	140A
551150	150A
551175	175A
551200	200A
551250	250A
551300	300A

Time vs. Percent of Rated Current



% of Rated Current	Min Hold Time	Max Hold Time
100%	No Trip (≥ 30 Minutes)	
135%	50s	30m
200%	12s	45s
300%	3.5s	15s

Trip time: Ambient temperature 25°C \pm 3°C

*Trip time information is only for models up to 200A. For information regarding 250A and 300A models please contact the factory.

Electrical Specifications

Voltage Rating	42VDC; 48VDC
Reset Type	Type I - Auto Reset
Interrupting Rating	3000A @ 30VDC (ABYC E-11); 1500A @ 48VDC; 000A @ 44VDC
Operation Temperature	-25 °F ~ 180 °F -32 °C ~ 82 °C
Testing	SAE J553, ABYC-E11

Material Specifications

In-Line Heavy Duty High Amp - Waterproof Circuit Breaker	
Body Material	Thermoset Plastic (UL94V-0)
Terminals Material	Nickel Plated
Terminals Configuration	3/8"-16 Stud
Mounting Type	Surface Mount
Studs Torque	30.5 N.m max.
Mounting Torque	~24 N-m MAX
Ignition Protected	SAE J1171
Ingress Protection	IP67

High Amperage Heavy Duty Circuit Breaker

551



Rev **Date of issue** **Revision Notes**

Designed **Approved**

Rev	Date of issue	Revision Notes	Designed	Approved
H	10-14-2025	Updated Voltage Rating; Updated Interrupting Rating	RC	OF