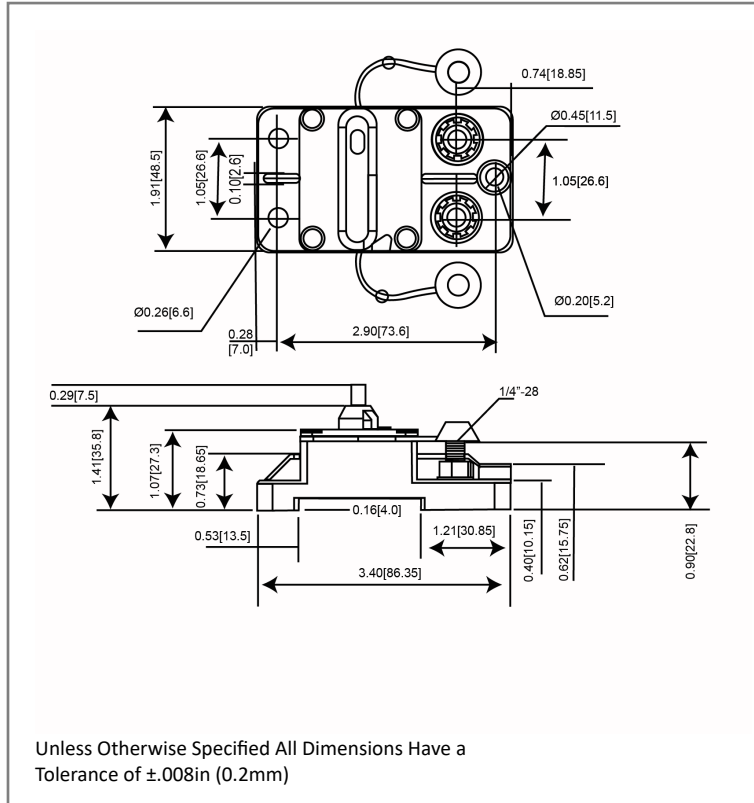


High Amperage Heavy Duty Circuit Breaker

453



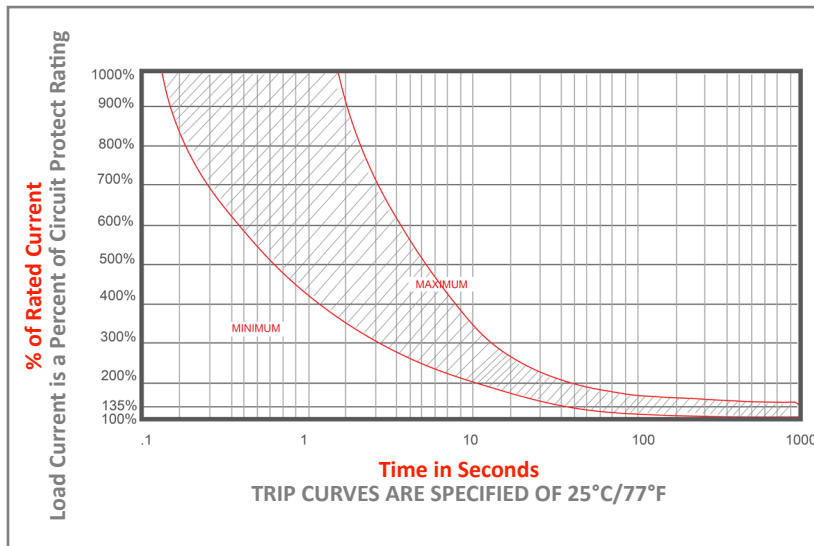
Mechanical Dimensions: Inches [mm]



Part Numbers Information

Optifuse P/N	Current
453025	25A
453030	30A
453040	40A
453050	50A
453060	60A
453070	70A
453080	80A
453090	90A
453100	100A
453120	120A
453135	135A
453140	140A
453150	150A
453175	175A
453200	200A
453250	250A

Time vs. Percent of Rated Current



% of Rated Current	Min Hold Time	Max Hold Time
100%	No Trip (≥ 30 Minutes)	
135%	50s	30m
200%	12s	45s
300%	3.5s	15s

Trip time: Ambient temperature 25°C ± 3°C
 *Trip time information is only for models up to 200A. For information regarding 250A model please contact the factory.

Electrical Specifications

Voltage Rating	42VDC; 48VDC
Reset Type	Type III – Manual Reset
Interrupting Rating	3000A @ 30VDC (ABYC E-11); 1500A @ 48VDC; 3000A @ 44VDC
Operation Temperature	-25 °F ~ 180 °F -32 °C ~ 82 °C
Testing	SAE J553, ABYC-E11

Material Specifications

In-Line Heavy Duty High Amp - Waterproof Circuit Breaker	
Body Material	Thermoset Plastic (UL94V-0)
Terminals Material	Nickel Plated
Terminals Configuration	1/4"-28 Stud
Mounting Type	Surface Mount
Studs Torque	10.3 N.m max.
Mounting Torque	~13.6 N-m MAX
Ignition Protected	SAE J1171
Ingress Protection	IP67

High Amperage Heavy Duty Circuit Breaker

453



Rev **Date of issue** **Revision Notes**

Designed **Approved**

Rev	Date of issue	Revision Notes	Designed	Approved
H	10-14-2025	Updated Voltage Rating; Updated Interrupting Rating	RC	OF