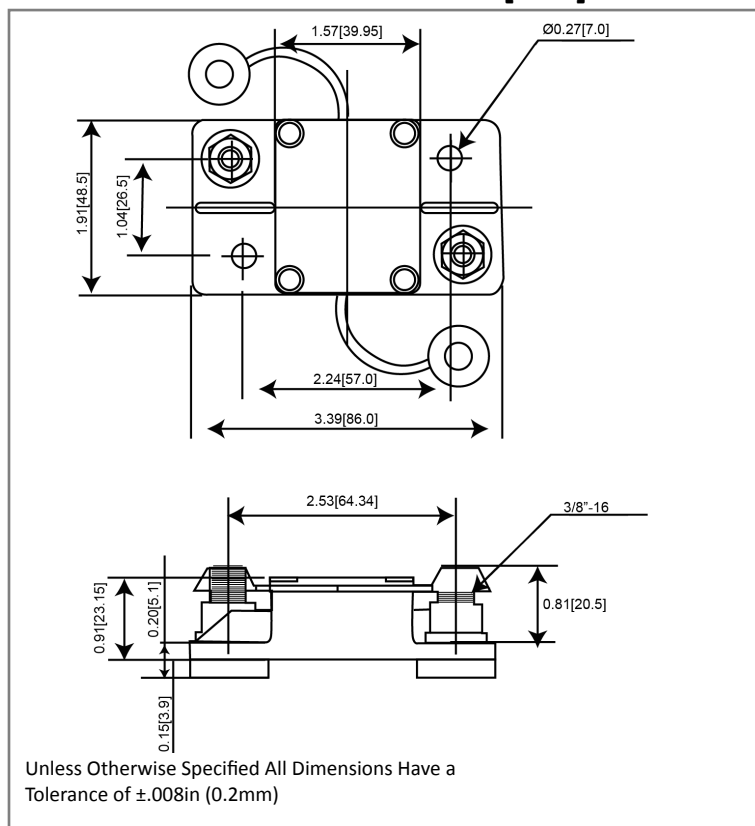
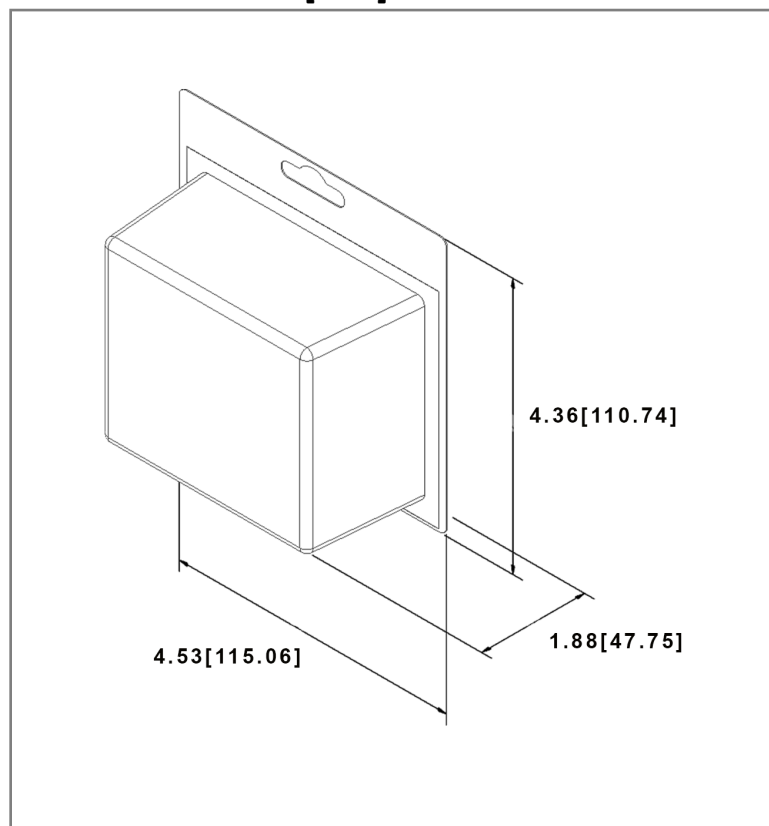


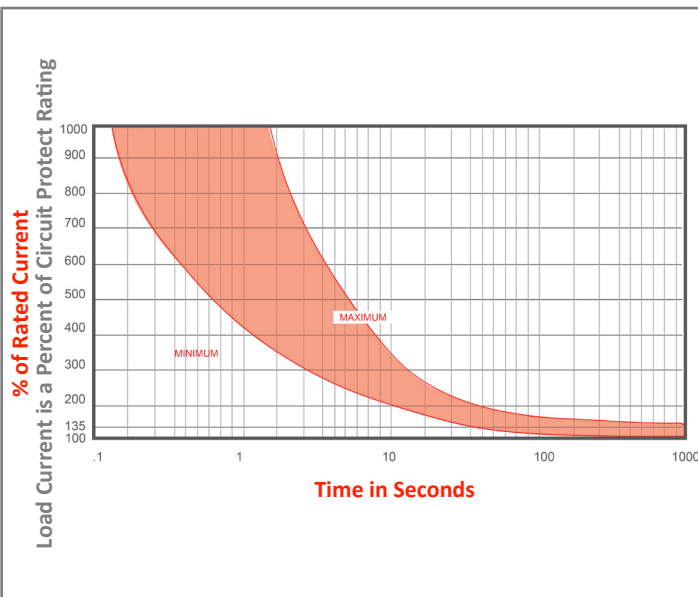
## Mechanical Dimensions: Inches [mm]



## Retail Pack: Inches [mm]



## Time vs. Percent of Rated Current



% of Rated Current	Min Hold Time	Max Hold Time
100%	No Trip ( $\geq 30$ Minutes)	
135%	50s	30m
200%	12s	45s
300%	3.5s	15s

**Trip time:** Ambient temperature  $25^{\circ}\text{C} \pm 3^{\circ}\text{C}$

\*Trip time information is only for models up to 200A. For information regarding 250A and 300A models please contact the factory.

## Electrical Specifications

<b>Voltage Rating</b>	42VDC; 48VDC 14VDC (250A & 300A models)
<b>Reset Type</b>	Type I - Auto Reset
<b>Interrupting Rating</b>	3000A @ 30VDC (ABYC E-11); 1500A @ 48VDC; 3000A @ 44VDC 1500A @ 30VDC (175A~300A)
<b>Operation Temperature</b>	-25 °F ~ 180 °F   -32 °C ~ 82 °C
<b>Testing</b>	SAE J553, ABYC-E11

## Material Specifications

Heavy Duty High Amp - Waterproof Circuit Breaker	
<b>Body Material</b>	Thermoset Plastic (UL94V-0)
<b>Terminals Material</b>	Nickel Plated
<b>Terminals Configuration</b>	3/8"-16 Stud
<b>Mounting Type</b>	Surface Mount
<b>Studs Torque</b>	30.5 N.m max.
<b>Mounting Torque</b>	~24 N-m MAX
<b>Ignition Protected</b>	SAE J1171
<b>Ingress Protection</b>	IP67

## Part Numbers Information

Amperage	Bulk Part #	Retail Pack # Blister Card	Pack Size
25A	351025	351025-BP	1
30A	351030	351030-BP	1
40A	351040	351040-BP	1
50A	351050	351050-BP	1
60A	351060	351060-BP	1
70A	351070	351070-BP	1
80A	351080	351080-BP	1
90A	351090	351090-BP	1
100A	351100	351100-BP	1
120A	351120	351120-BP	1
135A	351135	351135-BP	1
140A	351140	351140-BP	1
150A	351150	351150-BP	1
180A	351175	351175-BP	1
200A	351200	351200-BP	1
250A	351250	351250-BP	1
300A	351300	351300-BP	1

**Disclaimer:** Information provided is believed to be accurate and reliable. Users are responsible for confirming the suitability and performance of any OptiFuse product for their particular application. These products may not be appropriate for every use, and proper evaluation is recommended before implementation. For additional information, please visit [optifuse.com/product-disclaimer](http://optifuse.com/product-disclaimer).

Specifications are subject to change without notice

Rev	Date of issue	Revision Notes	Designed	Approved
J	03-16-2026	Updated Volatage Rating; Updated Interrupting Rating	RC	OF